



Highland Catholic SCHOOL

Student-athletes, coaches and spectators are **required to wear face coverings** while indoors.

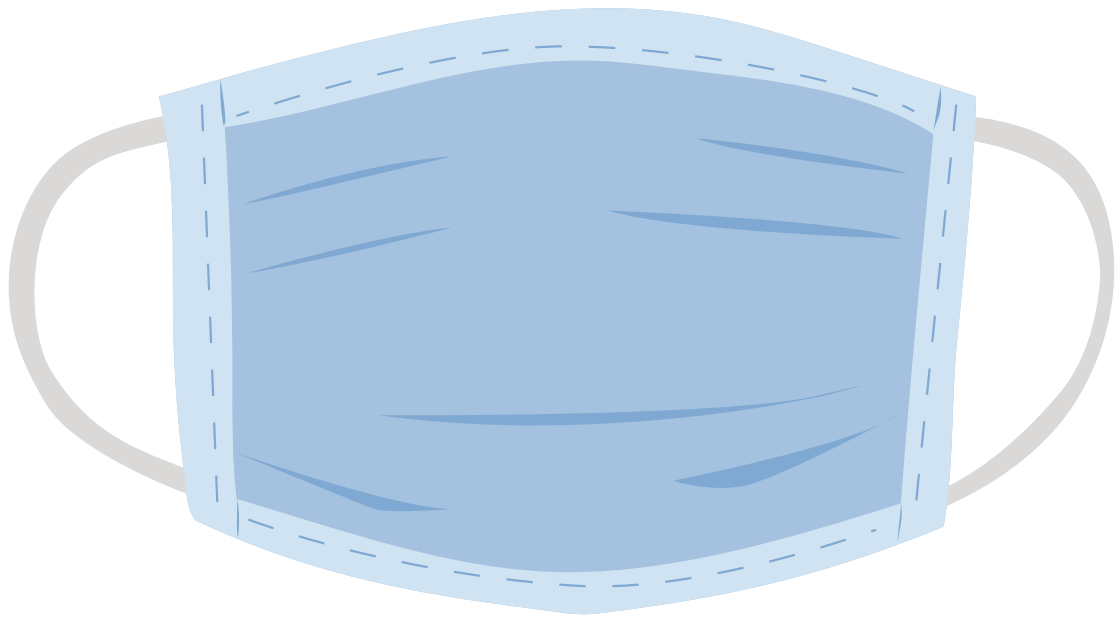
One fan per student athlete.

To reduce transmission risk and to follow quarantine guidelines, three feet of physical distance is strongly recommended between student-athletes whenever not actively participating in the sport. Coaches, spectators, and game personnel are also strongly recommended to maintain at least three feet of distance at all times as well.

Please Note: Our gym is quite small so we ask that you wait outside for teams and fans of one team to exit before entering.

Thank you and God bless!

Masks are required inside



Student-athletes, coaches and spectators are required to wear face coverings while indoors.

No Food or Drink in the Gym



Highland Catholic
SCHOOL